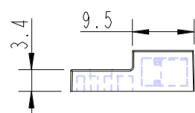
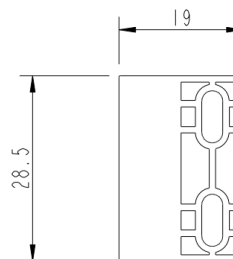
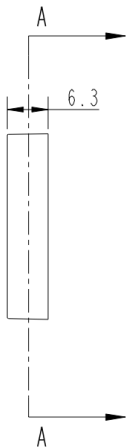


Section A-A



Magnetical Characteristics							@25°C
Magnet available for this series	—	1	2	3	4	5	
Type	—	NdFeB	Ferrite	—	—	—	
Grade		N35H	Y35	—	—	—	
Remanence Br	mT	1170-1220	400-420	—	—	—	
Coercivity HcB	kA/m	>868	167-199	—	—	—	
Coercivity HcJ	kA/m	>1353	167	—	—	—	
Energy Product (BH)	kJ/m <sup>3</sup>	263-287	30.3-31.9	—	—	—	
<b>Environmental Characteristics</b>							
Operating temperature	°C	-20...+85	-20...+85	—	—	—	
<b>Material Information</b>							
Housing material	—	PA66GF	PA66GF	—	—	—	
Housing color	—	blue	blue	—	—	—	
<b>Available Sensor</b>		<b>Customized version (available upon request)</b>			<b>Approvals</b>		
MMS-103 / MMS-104		Magnet type / Magnet grade / Housing color			RoHS,REACH		